



DARLINGTON
Borough Council

Children's Social Care Performance & Practise Report

Year End 2021-22 (April 2021 to March 2022)

Scrutiny

Scrutiny

2021-22 Performance Summary

Referral: 72.1% of the referrals completed were finalised within 1 working day. This is a decrease when compared with 77.7% of referrals completed within 1 working day in 2020/21 however, that was with 25.9% less referrals to process.

4.7% of the referrals took over 3 working days to be completed in 2021/22 which is positively just below our target of 5%.

Re-Referrals: Re-referrals continue to remain low with 10.5% of the children having a further referral within 12 months. This is below the internal target of 18%, our statistical neighbour (22.9%), regional (21.6%) and national average (22.7%) (LAIT 2021).

Building Stronger Families: 839 Early Help Assessments (EHA) were started in 2021/22, 19.2% of which were initiated by external agencies.

Missing: 31 Children in Care (CiC) were reported missing in 2021/22 with a total of 253 episodes. Where children are looked after by other local authorities but residing in Darlington, the ERASE Team have been alerted and provided with relevant information to ensure that the young people have been appropriately placed.

Children & Families Assessments: 806 Children & Families (C&F) assessments were completed in 2021/22 with a 357.8 rate per 10,000 population.

C&F Timeliness: Social workers completed 84.5% of the C&F assessments within timescale in 2021/22.

Section 47 enquiries: At the end of 2021/22 the rate for a section 47 enquiry being started was 280.1 per 10,000 population with 631 enquiries.

Child Protection Conference Timeliness: 79.3% of Initial Child Protection Conferences (ICPC) were held within 15 working days from the strategy meeting / section 47 being initiated, excluding transfer-in conferences, in 2021/22.

Child Protection Plans: 120 children were subject to a Child Protection plan (CP) as at the end of March 2022. This is an increase on the 87 children who were subject to CP at the end of March 2021. Although Darlington's rate per 10,000 population for children subject to a CPP has increased to 53.3, this is still below our statistical neighbours (55.8) and regional (67.2) rate as reported in the 2021 LAIT.

100.0% of CP cases were allocated to a social worker and all the CP reviews were carried out in timescale. In 2021/22 there was no child ceasing CP who had been subject to the plan for 2 or more years. At the end of March 2022, the percentage of children becoming subject to a CP plan for a second or subsequent time within 2 years of the previous plan ending was 7.1%.

Child Protection Statutory visits: 82.9% of children received a statutory Child Protection (CP) visit in 2021/22 within 10 working days.

Children in Care: 273 children were in care as of March 2022, 1.1% of which are unaccompanied asylum-seekers. During 2021/22 a total of 100 children came into the care of the DBC and a total of 99 children ceased to be in care.

Children in Care Reviews: 100.0% of Children in Care (CiC) were allocated to a qualified social worker. 98.8% of the reviews have been completed within required timescales in 2021/22.

Children in Care Statutory visits: 90.1% of statutory visits for Children in Care (CiC) were completed in timescale in 2021/22. This is in line with our internal target of 90%.

Children in Care Placements: 10.6% of Children in Care (CiC), as of March 2022, have had 3 or more placements within the previous 12 months. This is at the internal target of 10%. 74.0% of our Children in Care aged under 16 (who have been looked after for at least 2.5 years) have been in their current placement continuously for at least 2 years. This is positively above our target of 68.0%. 6.6% of our Children in Care have been placed 20 or more miles away from home as of March 2022, which is positively below our target of 10.0%. This relates to young people whose placement is appropriate for enabling them to have the best support either with family links or specialised care and this provision was not available within 20 miles.

Initial Health Assessments: 82.1% of children newly in care were seen by CDDFT within their timescale of 20 days in 2021/22.

Health and Dental Reviews: 90.5% of children due a review health assessment by March 2022 have had one completed. 83.7% of Children in Care, that were due a dental check assessment by March 2022 have had one completed.

Care leavers: 100.0% of care leavers were in suitable accommodation at the end of March 2022. 65.4% of care leavers were in employment and 11.5% were in further education.

REFERRALS - TIMELINESS

DEFINITION Percentage of referrals completed within 1 working day and over 3 working days. Referrals completed within 1 working day indicates that decisions regarding the services required are made in a timely manner to minimise drift and delay and to ensure that children are safe.

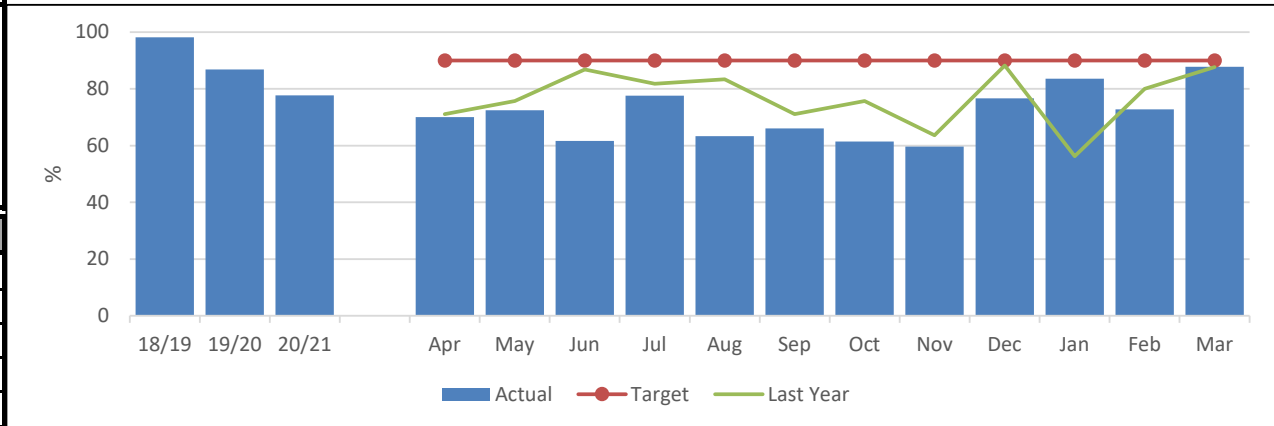
PERFORMANCE ANALYSIS

In 2021/22, 72.1% of the referrals completed were finalised within 1 working day. This is a decrease when compared with 77.7% of referrals completed within 1 working day in 2020/21 however, that was with 25.9% less referrals to process. 4.7% of the referrals took over 3 working days to be completed in 2021/22 which is positively just below our target of 5%.

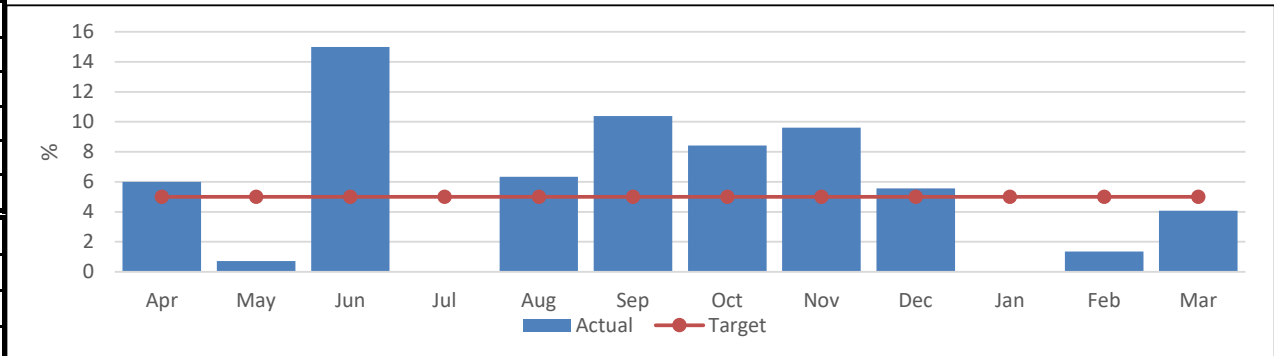
All referrals that are completed out of timescale are reviewed by the service manager to ensure delay was unavoidable. No negative impacts on the families have been highlighted because of these delays.

CSC 022	CSC 026
Monthly % of referrals completed within 1 working day.	Monthly % of referrals completed in over 3 working days.

CSC 022: Monthly % of referrals completed within 1 working day.



CSC 026: Monthly % of referrals completed in over 3 working days.



IN MONTH PERFORMANCE	Target	90%	5%
	Apr-21	70.0	6.0
	May-21	72.5	0.7
	Jun-21	61.7	15.0
	Jul-21	77.6	0.0
	Aug-21	63.3	6.3
	Sep-21	66.0	10.4
	Oct-21	61.5	8.4
	Nov-21	59.6	9.6
	Dec-21	76.7	5.6
	Jan-22	83.6	0.0
	Feb-22	72.8	1.4
	Mar-22	87.8	4.1

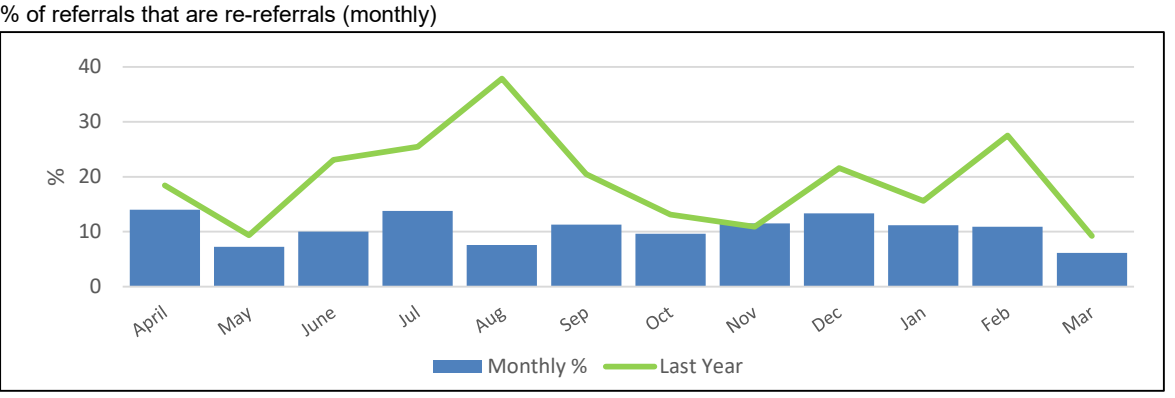
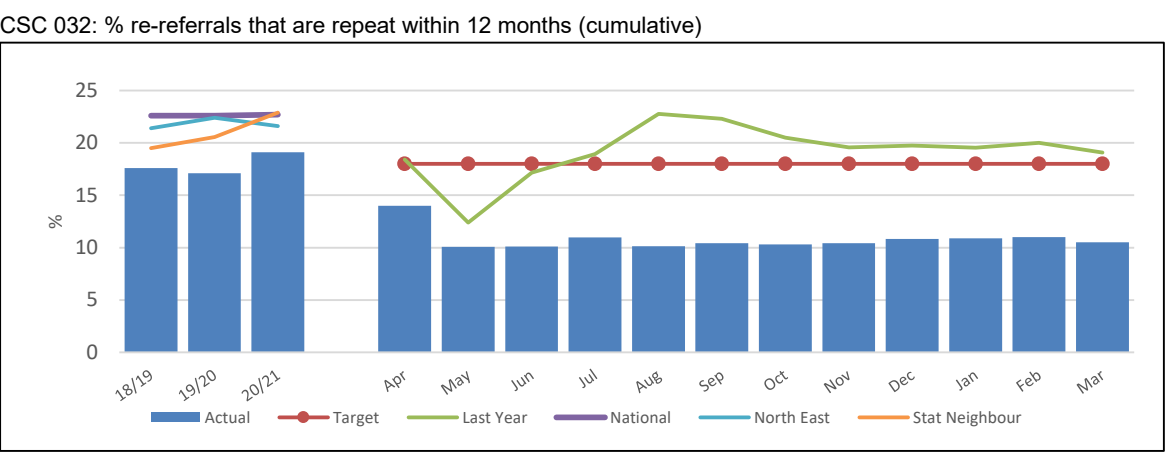
ANNUAL TREND	2018/19	98.2	0.0
	2019/20	86.8	1.6
	2020/21	77.7	4.7
	2021/22	72.1%	5.6%

REFERRALS - RE-REFERRALS

DEFINITION Percentage of re-referrals that are received within 12 months of a previous referral (based on referral start dates)
 A re-referral to Children's Social Care could be an indication that the previous referral was inappropriately closed down without addressing the initial concerns or issues.

PERFORMANCE ANALYSIS Re-referrals continue to remain low in this reporting year with 10.5% of the children having a further referral within 12 months. This is below the internal target of 18%, our statistical neighbour (22.9%), regional (21.6%) and national average (22.7%) (LAIT 2021).

	CSC 034	CSC 032	% of referrals that are re-referrals (monthly)
	Monthly number of re-referrals that are repeat within 12 months	% re-referrals that are repeat within 12 months (cumulative)	
IN MONTH PERFORMANCE	Target	18%	
	Apr-21	7	14.0
	May-21	5	7.2
	Jun-21	6	10.0
	Jul-21	8	13.8
	Aug-21	6	7.6
	Sep-21	12	11.3
	Oct-21	8	9.6
	Nov-21	6	11.5
	Dec-21	12	13.3
	Jan-22	13	11.2
	Feb-22	16	10.9
	Mar-22	6	6.1
ANNUAL TREND	2018/19	205	17.6
	2019/20	171	17.1
	2020/21	143	19.1
	2021/22	105	10.5



EARLY HELP ASSESSMENTS - STARTED

DEFINITION The number of individual Early Help Assessments (EHA) started in month and year to date, including those initiated by external agencies. The start date of the EHA is taken from the form created date in Liquid Logic and the start date of the external EHA is taken from the contact date when the agency informed us of the EHA.

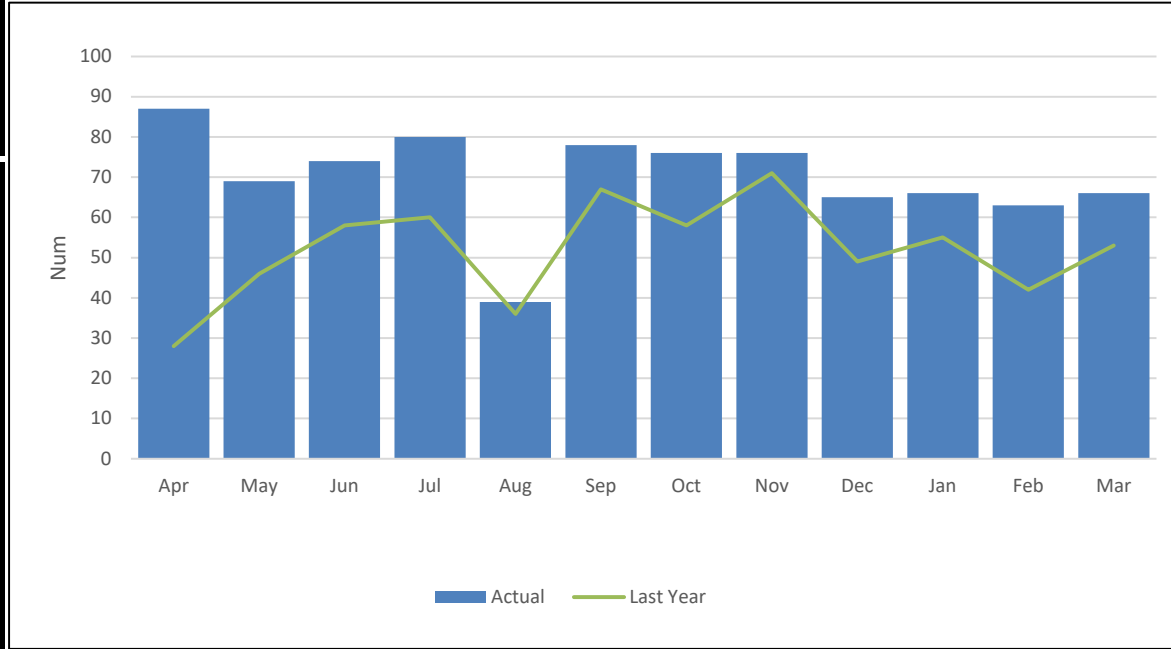
PERFORMANCE ANALYSIS 839 Early Help Assessments (EHA) were started in 2021/22, 19.2% of which were initiated by external agencies.

CSC 002
Total number of individual EHA's started in month (inc. external)

IN MONTH PERFORMANCE	Target	
	Apr-21	87
	May-21	69
	Jun-21	74
	Jul-21	80
	Aug-21	39
	Sep-21	78
	Oct-21	76
	Nov-21	76
	Dec-21	65
	Jan-22	66
	Feb-22	63
	Mar-22	66

ANNUAL TREND		
2018/19		869
2019/20		893
2020/21		623
2021/22		839

CSC 002: Total number of individual EHA's started in month (inc. external)



MISSING EPISODES

DEFINITION	The number of episodes of children going missing in Darlington, who are a Child in Care.
-------------------	--

PERFORMANCE ANALYSIS	<p>31 Children in Care (CiC) were reported missing in 2021/22 with a total of 253 episodes.</p> <p>This increase in the number of missing episodes is a result of a few young people who are more frequently reported missing from placement (107 episodes in 2020/21 to 253 in 2021/22). Work continues to help them understand the balance between independence with acceptable curfew times and ensuring they are safe. This has also been the case with the increase in OLA CIC missing episodes when compared to last year (90 episodes in 2020/21 to 152 in 2021/22). Where children are looked after by other authorities but cared for in Darlington, the ERASE Team have been alerted and provided with relevant information to ensure that the young people have been appropriately placed.</p>
-----------------------------	---

CSC 246	
Number of missing relating to Children in Care with DBC	Of which are in a placement more than 20 miles from home

		CSC 246		CSC 246	
		Ep.	Child.	Ep.	Child.
IN MONTH PERFORMANCE	Apr-21	8	5	1	1
	May-21	15	7	1	1
	Jun-21	30	10	5	1
	Jul-21	16	7	1	1
	Aug-21	25	6	5	1
	Sep-21	24	10	5	2
	Oct-21	35	8		
	Nov-21	24	9		
	Dec-21	14	9		
	Jan-22	24	8	1	1
	Feb-22	18	5	2	1
	Mar-22	20	6	1	1
ANNUAL TREND child counted once	2018/19	199	36	43	10
	2019/20	129	24	32	10
	2020/21	107	30	15	4
	2021/22	253	31	22	4

ASSESSMENTS

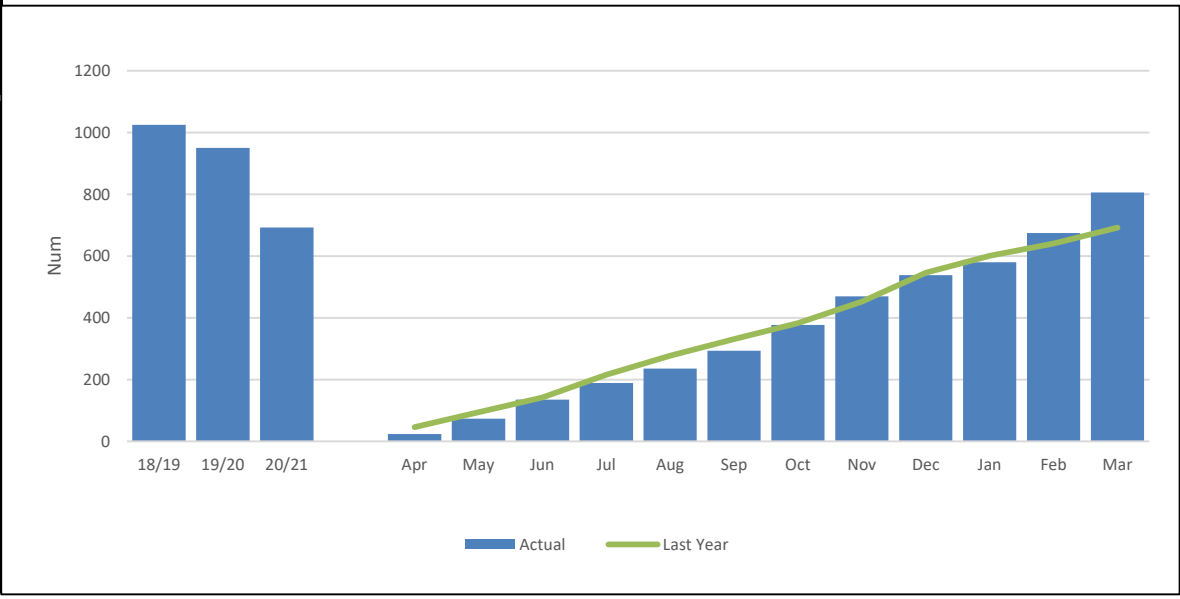
DEFINITION	Monthly and cumulative number of Children & Families assessments completed.
-------------------	---

PERFORMANCE ANALYSIS	806 Children & Families assessments were completed in 2021/22 with a 357.8 rate per 10,000 population. This is an increase on the 692 assessments completed in 2020/21, but a decrease when compared to the 2 years previous.
-----------------------------	---

CSC 036
Number of Children & Families assessments completed year to date

CSC 036: Number of Children & Families assessments completed year to date

IN MONTH PERFORMANCE	Apr-21	24
	May-21	73
	Jun-21	135
	Jul-21	189
	Aug-21	236
	Sep-21	293
	Oct-21	377
	Nov-21	469
	Dec-21	538
	Jan-22	580
	Feb-22	674
	Mar-22	806
	ANNUAL TREND	2018/19
2019/20		950
2020/21		692
2021/22		806



ASSESSMENTS - TIMELINESS

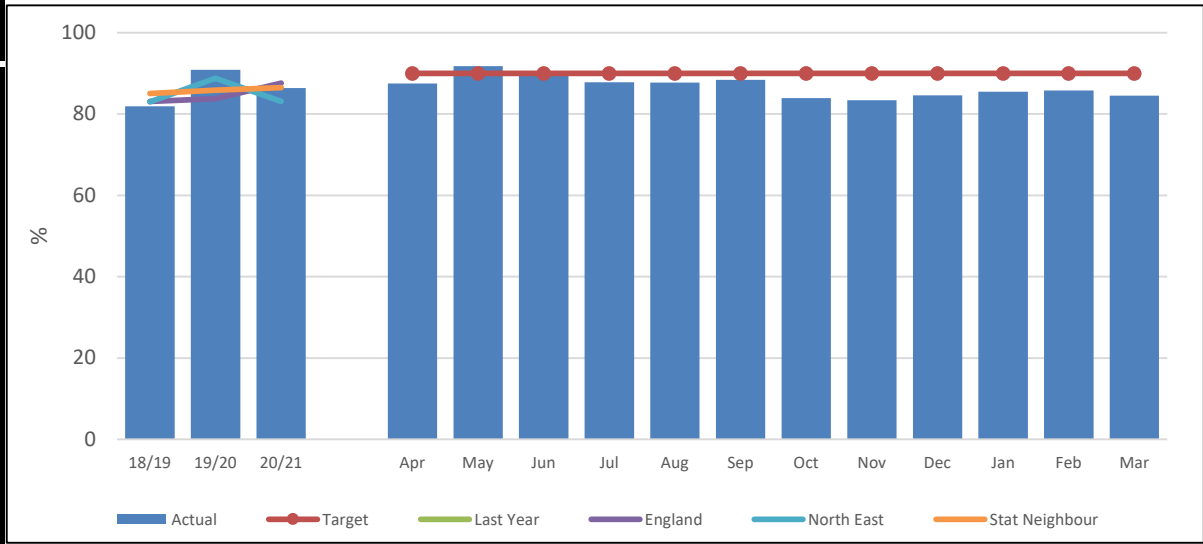
DEFINITION	<p>Of those assessments completed in a period, the percentage completed within 45 working days. Day zero is the first working day on or after the start date of the referral, or strategy discussion decided to initiate S47 enquiries, or where new information indicates that an assessment should be undertaken. The end date is the first working day on or after the recorded date the Team Manager closes the single assessment.</p> <p>A process indicator as a proxy measure for improved child safety and how quickly services can respond when a child is thought to be at risk of serious harm. Local authorities should investigate and address concerns in a timely and efficient way.</p>
-------------------	---

PERFORMANCE ANALYSIS	<p>84.5% of our C&F assessments were completed within timescale in 2021/22. This just below 2020/21 performance of 86.4% in timescale, however, this year there were 16.5% more assessments completed.</p>
-----------------------------	--

CSC 038
% C&F Assessments completed within 45 working days (Year to date)

IN MONTH PERFORMANCE	Target	90%
	Apr-21	87.5
	May-21	91.8
	Jun-21	90.4
	Jul-21	87.8
	Aug-21	87.7
	Sep-21	88.4
	Oct-21	83.9
	Nov-21	83.4
	Dec-21	84.6
	Jan-22	85.5
	Feb-22	85.8
	Mar-22	84.5
ANNUAL TREND	2018/19	81.9
	2019/20	90.9
	2020/21	86.4
	2021/22	84.5

% C&F Assessments completed within 45 working days (Year to date)



SECTION 47 - STARTED

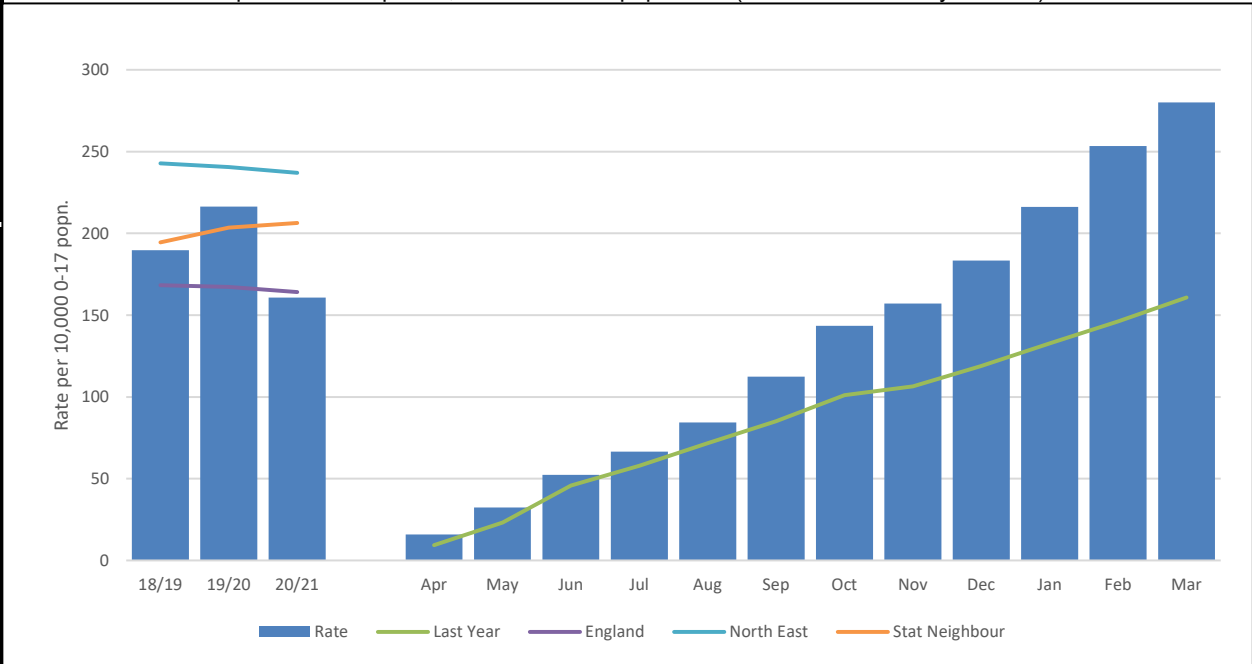
DEFINITION	Number of children who have had a section 47 enquiries started monthly and year to date and the actual number of enquires started.
-------------------	--

PERFORMANCE ANALYSIS	At the end of 2021/22 the rate for a section 47 enquiry being started was 280.1 per 10,000 population with 631 enquiries. This is an increase on the rate in 2020/21 (160.7) and 2019/20 (216.4).
-----------------------------	---

CSC 166	CSC 164
All children who had a section 47 enquires started in the month	Rate of section 47 enquiries started per 10,000 of the 0-17 population (Cumulative)

IN MONTH PERFORMANCE			
	Apr-21	36	16.0
	May-21	37	32.4
	Jun-21	45	52.4
	Jul-21	32	66.6
	Aug-21	40	84.3
	Sep-21	63	112.3
	Oct-21	70	143.4
	Nov-21	31	157.1
	Dec-21	59	183.3
	Jan-22	74	216.2
	Feb-22	84	253.5
	Mar-22	60	280.1

Rate of section 47 enquiries started per 10,000 of the 0-17 population (inc. children already on CPP)



ANNUAL TREND	2018/19	426	189.7
	2019/20	486	216.4
	2020/21	361	160.7
	2021/22	631	280.1

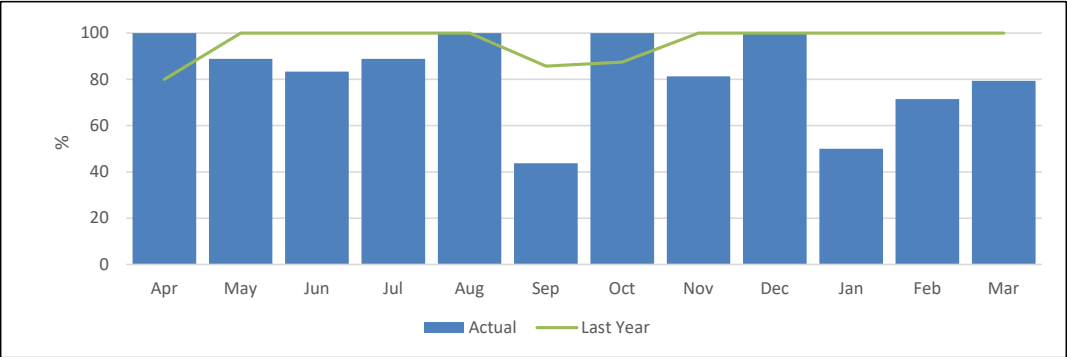
INITIAL CHILD PROTECTION CONFERENCES - TIMELINESS

DEFINITION Of those ICPC's held within the period (excluding transfer ins), the percentage held within 15 working days of the S47 enquiry. Provides an indication of how quickly the safety of children who are judged to be continuing to, or likely to suffer significant harm is being considered by a multi-agency meeting.

PERFORMANCE ANALYSIS 79.3% of the Initial Child Protection Conferences (ICPC) were held within 15 working days from the strategy meeting / section 47 being initiated, excluding transfer-in conferences in 2021/22.

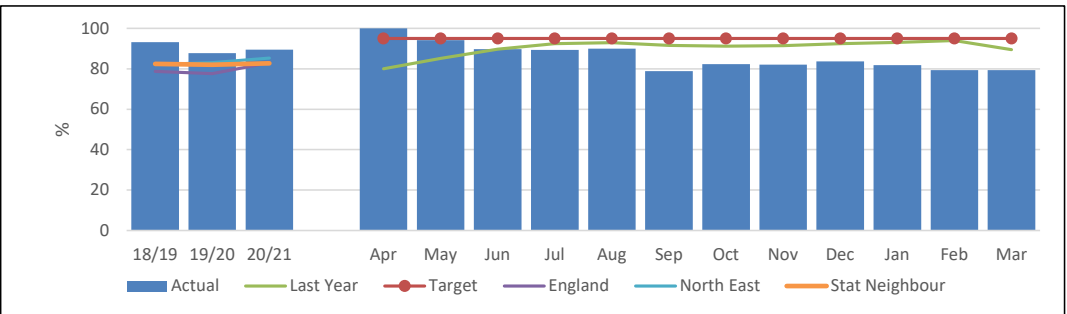
CSC 178	CSC 176
Monthly % of cases recorded in the Safeguarding Unit workbook where Child Protection strategy meeting / S47 start to initial child protection conference (ICPC) are within 15 days (CPP). Excludes transfer-in conferences.	% of cases where the initial child protection conference (ICPC) was within 15 days of the initiating strategy discussion / S47 start recorded in the Safeguarding Unit workbook (CPP). This EXCLUDES transfer-in conferences. Year to Date

CSC 178: Monthly % of cases recorded in the Safeguarding Unit workbook where Child Protection strategy meeting / S47 start to initial child protection conference (ICPC) are within 15 days (CPP). Excludes transfer-in conferences.



IN MONTH PERFORMANCE	Target	100	95
	Apr-21	100.0	100.0
May-21	88.9	88.9	94.1
Jun-21	83.3	83.3	89.7
Jul-21	88.9	88.9	89.4
Aug-21	100.0	100.0	90.0
Sep-21	43.8	43.8	78.8
Oct-21	100.0	100.0	82.3
Nov-21	81.3	81.3	82.1
Dec-21	100.0	100.0	83.7
Jan-22	50.0	50.0	81.8
Feb-22	71.4	71.4	79.3
Mar-22	79.3	79.3	79.3

CSC 176: % of cases where the initial child protection conference (ICPC) was within 15 days of the initiating strategy discussion / S47 start recorded in the Safeguarding Unit workbook (CPP). This EXCLUDES transfer-in conferences. Year to Date



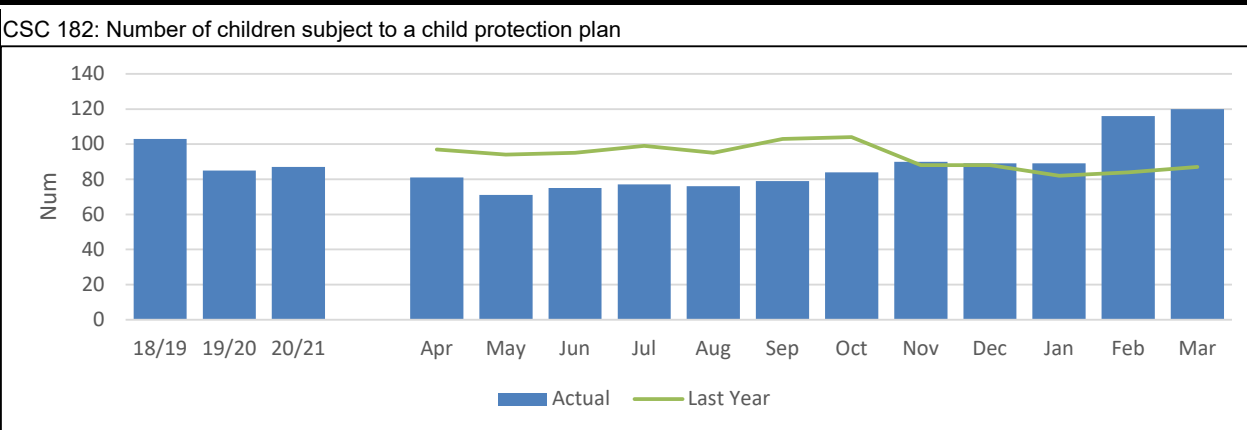
ANNUAL TREND	2018/19	95.4	93.2
	2019/20	89.5	87.7
	2020/21	94.4	89.5
	2021/22	79.3	79.3

CHILD PROTECTION

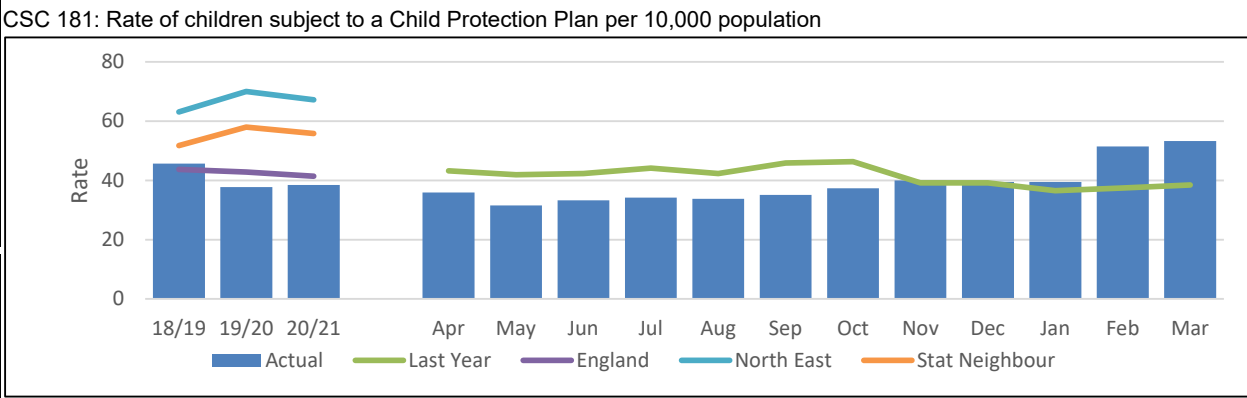
DEFINITION	Number of children subject to a Child Protection plan at the end of the month.
-------------------	--

PERFORMANCE ANALYSIS	120 children were subject to a Child Protection plan (CP) as at the end of March 2022. This is an increase on the 87 children who were subject to CP at the end of March 2021. Although Darlington's rate per 10,000 population for children subject to a CPP has increased to 53.3, this is still below our statistical neighbours (55.8) and regional (67.2) rate as reported in the 2021 LAIT.
-----------------------------	---

CSC 182	CSC 181
Number of children subject to a child protection plan	Rate of children subject to a Child Protection Plan per 10,000 population



IN MONTH PERFORMANCE			
	Apr-21	81	36.0
	May-21	71	31.5
	Jun-21	75	33.3
	Jul-21	77	34.2
	Aug-21	76	33.7
	Sep-21	79	35.1
	Oct-21	84	37.3
	Nov-21	90	40.0
	Dec-21	89	39.5
	Jan-22	89	39.5
	Feb-22	116	51.5
Mar-22	120	53.3	



ANNUAL TREND			
	2018/19	103	45.7
	2019/20	85	37.7
	2020/21	87	38.4
	2021/22	120	53.3

CHILD PROTECTION - ALLOCATION & REVIEWS

DEFINITION

The percentage of children subject to a Child Protection Plan at the end of the month and who at that date had had a Plan continuously for at least the previous 3 months, whose case was reviewed within the required timescales.

Reviews are a key element in delivering Child Protection Plans and effective reviews should ensure the provision of good quality interventions. This indicator is a proxy for the measurement of effectiveness of the interventions provided to children subject to a Child Protection Plan. "Working Together to Safeguard Children" guidance requires that the first review should be within 3 months of the initial child protection conference and thereafter at intervals of no more than 6 months.

PERFORMANCE ANALYSIS

100% of Child Protection Cases were allocated to a qualified social worker.

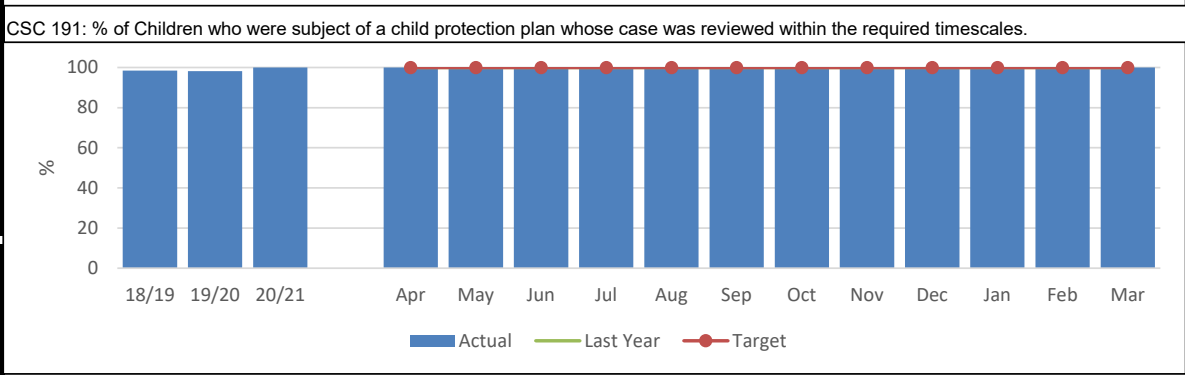
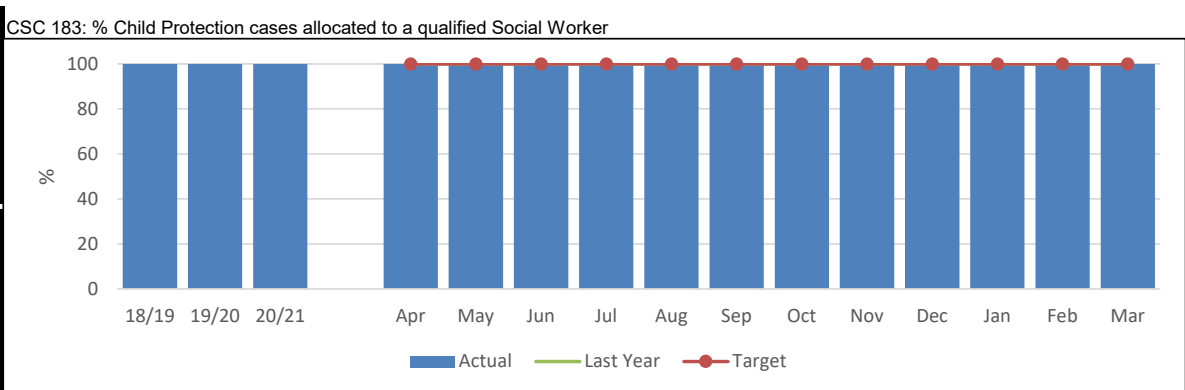
100% of Child Protection reviews have been completed within the required timescales.

Performance remains higher than statistical neighbours (91.8%), regional (91.0%) and national averages (93.2%) as reported in the 2021 LAIT.

CSC 183	CSC 191
% Child Protection cases allocated to a qualified Social Worker	% of Children who were subject of a child protection plan whose case was reviewed within the required timescales.

IN MONTH PERFORMANCE	Target	100	100	
	Apr-21	100.0	100.0	100.0
	May-21	100.0	100.0	100.0
	Jun-21	100.0	100.0	100.0
	Jul-21	100.0	100.0	100.0
	Aug-21	100.0	100.0	100.0
	Sep-21	100.0	100.0	100.0
	Oct-21	100.0	100.0	100.0
	Nov-21	100.0	100.0	100.0
	Dec-21	100.0	100.0	100.0
	Jan-22	100.0	100.0	100.0
	Feb-22	100.0	100.0	100.0
	Mar-22	100.0	100.0	100.0

ANNUAL TREND	2018/19	100.0	98.4
	2019/20	100.0	98.2
	2020/21	100.0	100.0
	2021/22	100.0	100.0

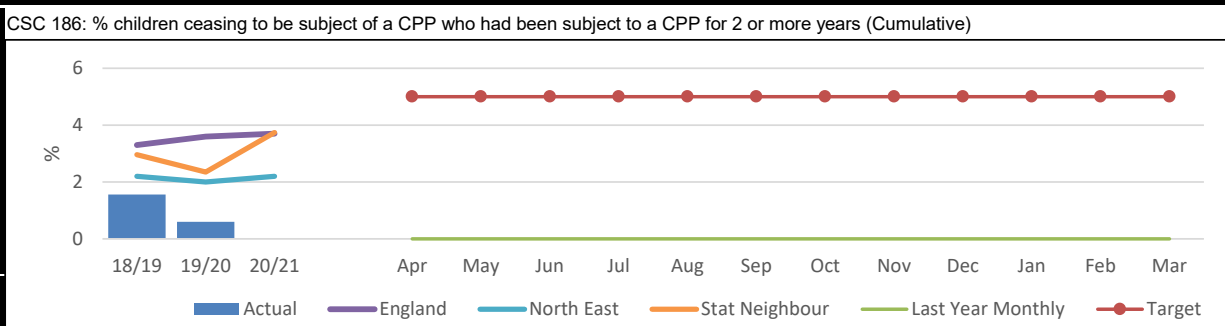


CHILD PROTECTION - TIME PERIODS

DEFINITION
 Percentage of children ceasing to be subject to a Child Protection Plan who had been subject to a Plan for 2 or more years, and percentage of children becoming subject to a Child Protection Plan for the 2nd or subsequent time within a) 2 years of a previous plan, and b) with a previous plan at any point.
 These indicators reflect the underlying principle that professionals should be working towards specified outcomes which, if implemented effectively, should lead to all children not needing to be the subject of a Child Protection Plan within a maximum of two years, or becoming subject of a Child Protection Plan for a second or subsequent time.

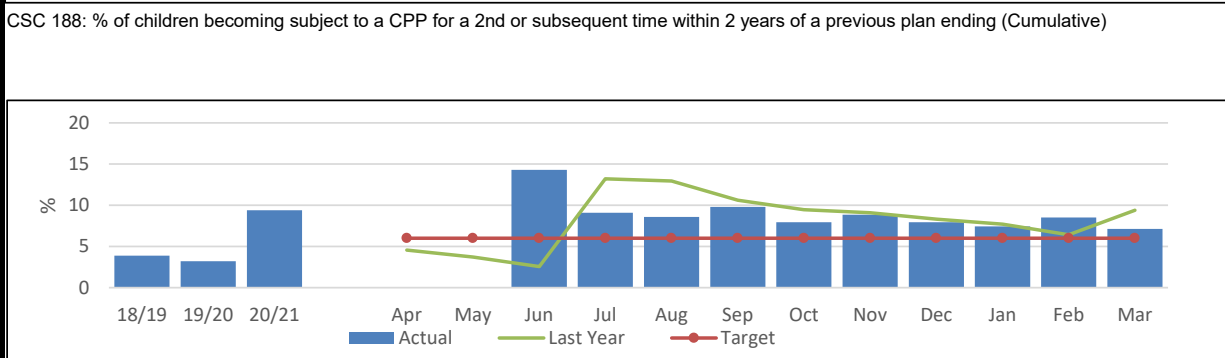
PERFORMANCE ANALYSIS
 7.1% of the children became subject to a CP plan for a second or subsequent time within 2 years of the previous plan ending. This is above our target of 6% but a positive decrease when compared to the percentage at March 2021 (9.4%).
 No child has ceased to be subject to a CP plan who had been subject to the plan for 2 or more years and we continue to remain below our target of 5%.

CSC 186	CSC 188
% children ceasing to be subject of a CPP who had been subject to a CPP for 2 or more years (Cumulative)	% of children becoming subject to a CPP for a 2nd or subsequent time within 2 years of a previous plan ending (Cumulative)



IN MONTH PERFORMANCE

Target	5%	6%
Apr-21	0.0	0.0
May-21	0.0	0.0
Jun-21	0.0	14.3
Jul-21	0.0	9.1
Aug-21	0.0	8.6
Sep-21	0.0	9.8
Oct-21	0.0	7.9
Nov-21	0.0	8.9
Dec-21	0.0	8.0
Jan-22	0.0	7.5
Feb-22	0.0	8.5
Mar-22	0.0	7.1



ANNUAL TREND

2018/19	1.6	3.9
2019/20	0.6	3.2
2020/21	0.0	9.4
2021/22	0.0	7.1

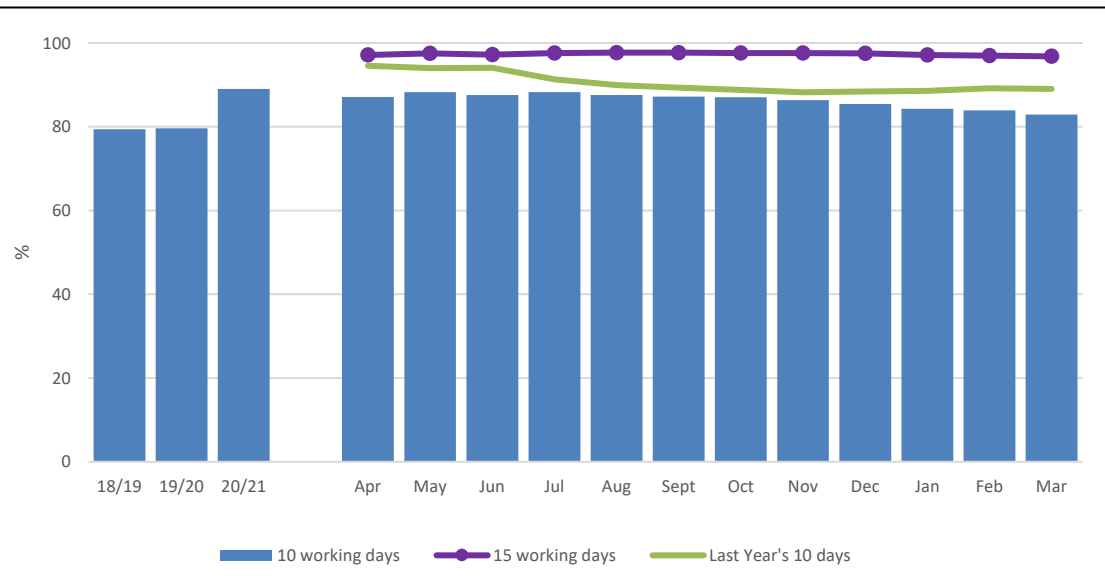
CHILD PROTECTION - STATUTORY VISITS

DEFINITION	Percentage of children subject to a Child Protection Plan who had all statutory visits carried out within timescales and percentage of Child Protection statutory visits completed within timescale monthly and year to date.
-------------------	---

PERFORMANCE ANALYSIS	82.9% of Child Protection statutory visits were completed within 10 working days in 2021/22 and 96.8% of the visits were completed within 15 working days.
-----------------------------	--

CSC 252b	
% Child Protection statutory visits completed within 10 working days year to date (cumulative)	% Child Protection statutory visits completed within 15 working days year to date (cumulative)

% Child Protection statutory visits completed year to date



IN MONTH PERFORMANCE	Target	90	90	
	Apr-21	87.1	97.1	97.1
	May-21	88.3	97.5	97.5
	Jun-21	87.5	97.2	97.2
	Jul-21	88.3	97.6	97.6
	Aug-21	87.6	97.7	97.7
	Sep-21	87.2	97.7	97.7
	Oct-21	87.0	97.6	97.6
	Nov-21	86.4	97.6	97.6
	Dec-21	85.4	97.5	97.5
	Jan-22	84.3	97.1	97.1
	Feb-22	83.9	97.0	97.0
	Mar-22	82.9	96.8	96.8

ANNUAL TREND	2018/19	79.3	95.7
	2019/20	79.6	93.8
	2020/21	89.0	98.4
	2021/22	82.9	96.8

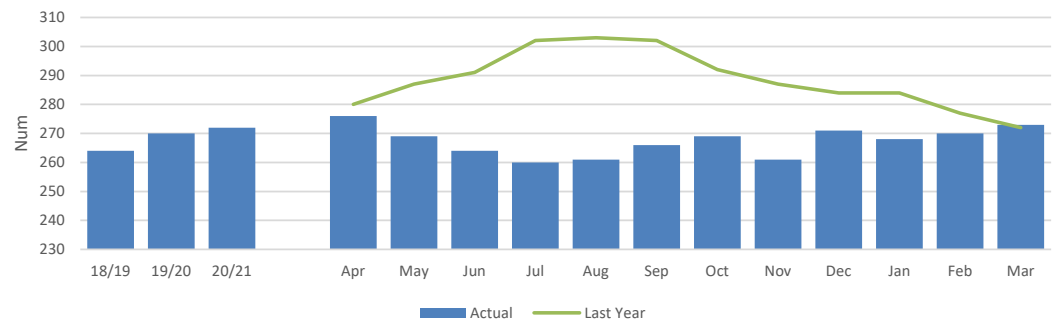
CHILDREN IN CARE

DEFINITION Number of Children in Care at the end of each month and of which are Unaccompanied Asylum Seeking Child (UASC).

PERFORMANCE ANALYSIS 273 children were in care as at March 2022, 1.1% of which are unaccompanied asylum-seekers. The rate of children in care per ten thousand population is similar to that at March 2021, but has been consistently lower each month when compared to 2020/21.

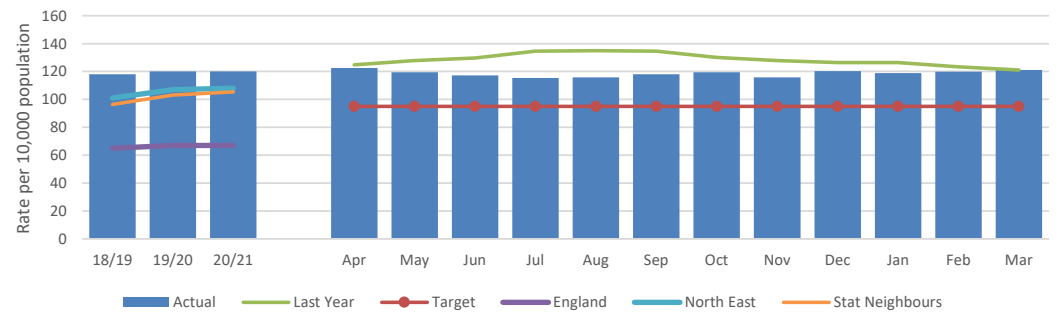
CSC 201		CSC 200
Total number of Children in Care	% of which are identified as a UASC	Rate of Children in Care Per 10,000 population

CSC 201: Total number of Children in Care



IN MONTH PERFORMANCE	Target			95
	Apr-21	276	0.7%	122.5
	May-21	269	0.7%	119.4
	Jun-21	264	0.8%	117.2
	Jul-21	260	0.8%	115.4
	Aug-21	261	0.8%	115.9
	Sep-21	266	0.8%	118.1
	Oct-21	269	0.7%	119.4
	Nov-21	261	0.8%	115.9
	Dec-21	271	0.7%	120.3
	Jan-22	268	1.1%	119.0
	Feb-22	270	1.1%	119.9
	Mar-22	273	1.1%	121.2

CSC 200: Rate of Children in Care Per 10,000 population



ANNUAL TREND	2018/19	264		118.0
	2019/20	270		120.0
	2020/21	272	0.7%	121.1
	2021/22	273	1.1%	121.2

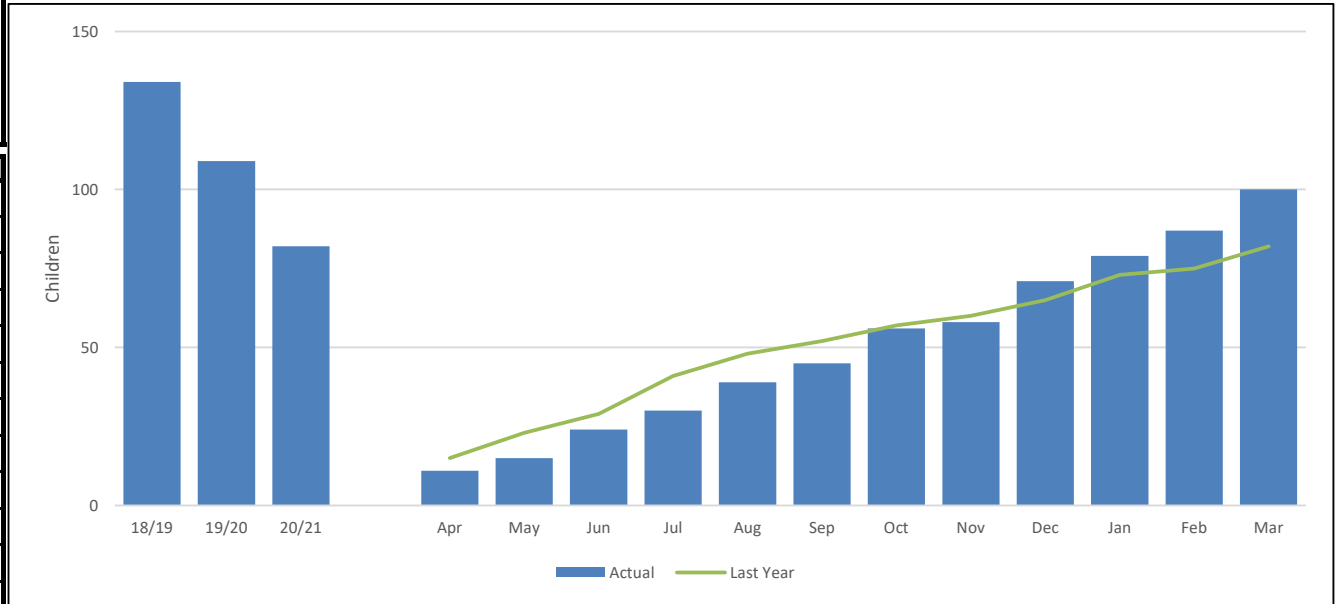
CHILDREN IN CARE - COMING INTO CARE

DEFINITION Number of children coming into the care of the local authority during the month and year to date and where they are an unaccompanied asylum seeking child (UASC). This is further broken down to show their first placement type.

PERFORMANCE ANALYSIS 100 children from 70 families came into care in 2021/22. This an increase when compared with the 82 children who came into care in 2020/21, but a decrease from 2019/20 (109 children) and 2018/19 (134 children). 2.0% of the young people coming into care during 2021/22 were accepted from the home officer as UASC (Unaccompanied Asylum-Seeking Child).

CSC 209	CSC 208
Monthly number of new cases of children coming into care	Total number of new cases of children coming into care within the year

Total number of new cases of children coming into care within the year



IN MONTH PERFORMANCE		CSC 209	CSC 208
Apr-21		11	11
May-21		4	15
Jun-21		9	24
Jul-21		6	30
Aug-21		9	39
Sep-21		6	45
Oct-21		11	56
Nov-21		2	58
Dec-21		13	71
Jan-22		8	79
Feb-22		8	87
Mar-22		13	100

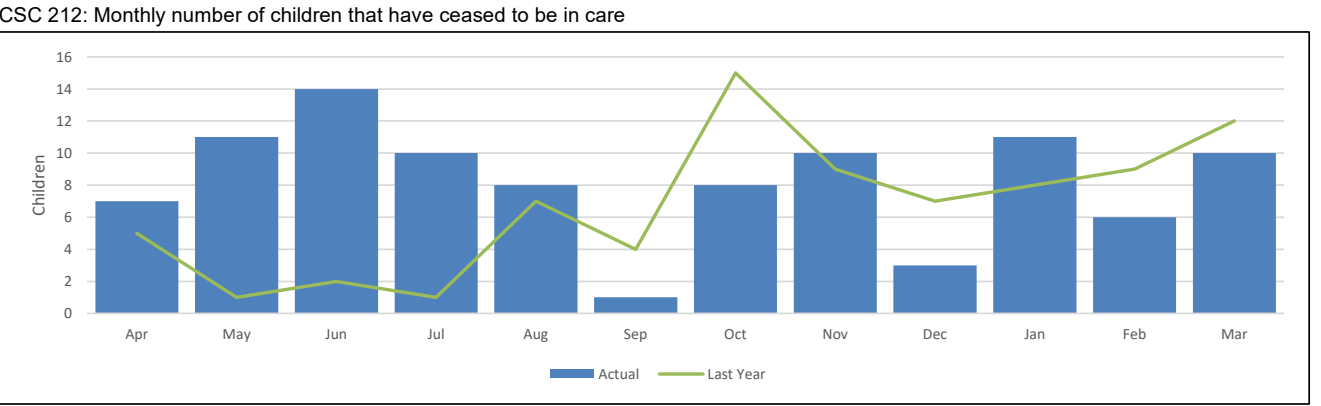
ANNUAL TREND		CSC 209	CSC 208
2018/19		134	134
2019/20		109	109
2020/21		82	82
2021/22		100	100

CHILDREN IN CARE - CEASING CARE

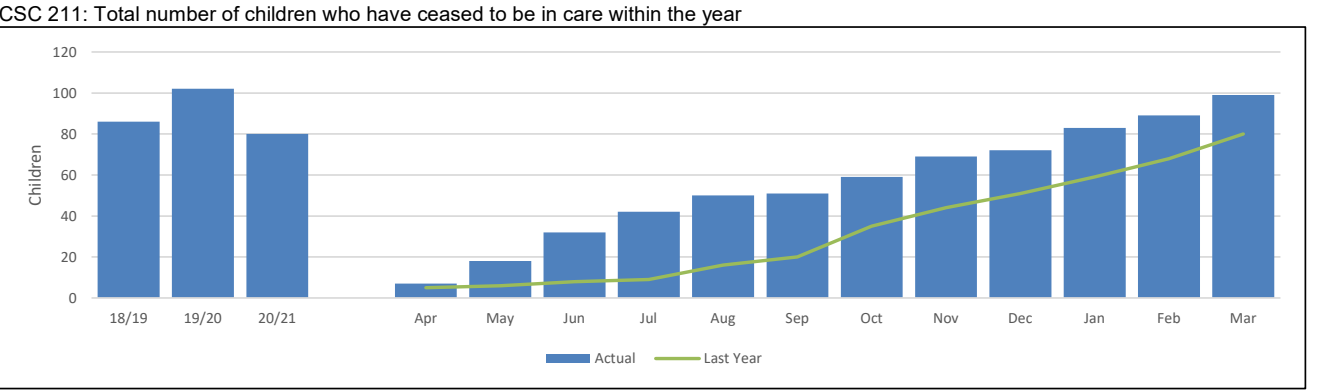
DEFINITION	Number of children ceasing to be a Child in Care during each month and year to date and their destination when they ceased being in care.
-------------------	---

PERFORMANCE ANALYSIS	<p>99 children and young people ceased to be in care in 2021/22. This is an increase when compared with the 80 children who ceased in 2020/21, a small decrease from 2019/20 (102 children) and an increase on 2018/19 (86 children).</p> <p>Of the children and young people who did cease CiC:</p> <ul style="list-style-type: none"> • 34.3% had a Special Guardianship Order (SGO) / Child Arrangement Order (CAO) granted to a relative. • 28.3% returned home to their parent. • 19.2% due to turning 18 and becoming a care leaver. • 15.2% were adopted. • 3.0% for other reasons. <p>The proportion of children who either returned home to their parent or had an SGO/CAO granted, is similar to that in 2020/21.</p>
-----------------------------	--

CSC 212	CSC 211
Monthly number of children that have ceased to be in care	Total number of children who have ceased to be in care within the year



IN MONTH PERFORMANCE			
	Apr-21	7	7
	May-21	11	18
	Jun-21	14	32
	Jul-21	10	42
	Aug-21	8	50
	Sep-21	1	51
	Oct-21	8	59
	Nov-21	10	69
	Dec-21	3	72
	Jan-22	11	83
	Feb-22	6	89
	Mar-22	10	99



ANNUAL TREND			
	2018/19	86	86
	2019/20	102	102
	2020/21	80	80
	2021/22	99	99

CHILDREN IN CARE - ALLOCATION & REVIEWS

DEFINITION

The percentage of Children in Care cases which should have been reviewed during the year ending 31 March that were reviewed on time during the year and the percentage of Children in Care cases that were allocated to a qualified Social Worker at the end of the month.

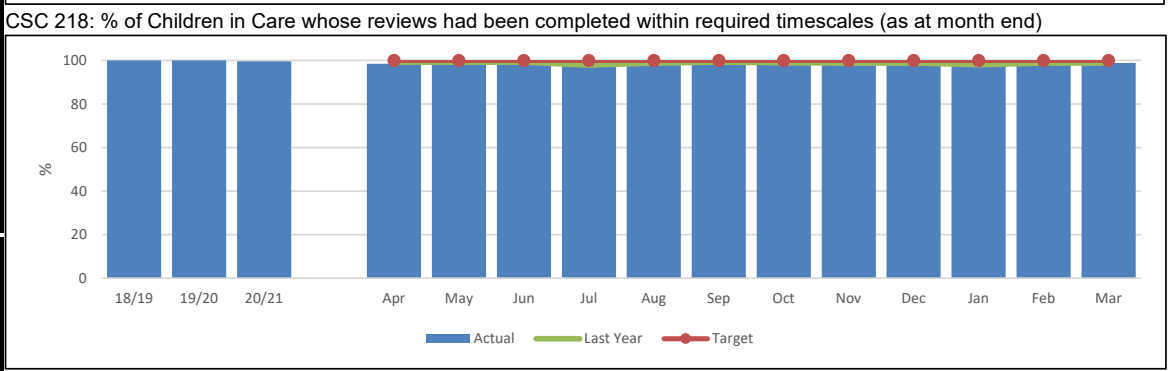
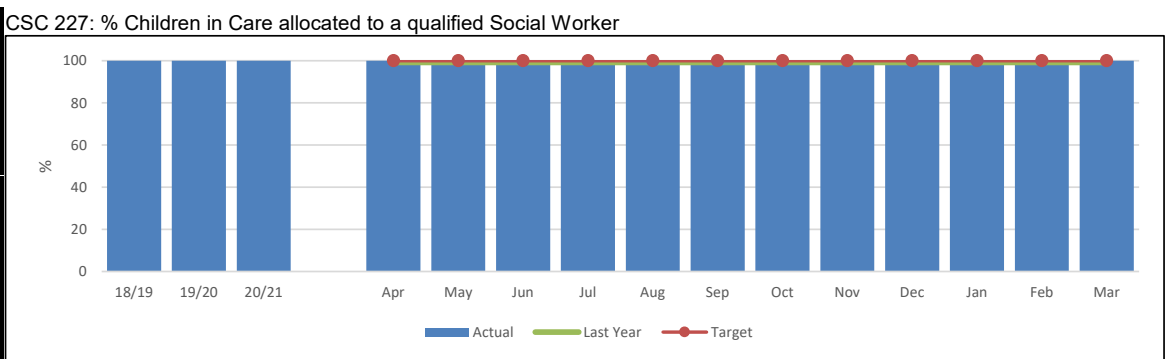
To improve compliance with local authorities' legal requirements under the Review of Children's cases Regulations 1991. The purpose of the review is to consider the plan for the child's welfare, to monitor the progress of the plan and amend it as necessary in light of changed information and circumstances. The statutory intervals are within 20 working days of placement, then within 3 months and 6 monthly thereafter, but reviews may be rescheduled or held inside these intervals if there are significant changes to the child's care plan.

PERFORMANCE ANALYSIS

100% of Children in Care (CiC) are allocated to a qualified social worker.

98.8% of the reviews have been completed within required timescales.

		CSC 227	CSC 218
		% Children in Care allocated to a qualified Social Worker	% of Children in Care whose reviews had been completed within required timescales (as at month end)
IN MONTH PERFORMANCE	Target	100	100
	Apr-21	100.0	98.5
	May-21	100.0	99.2
	Jun-21	100.0	99.3
	Jul-21	100.0	98.1
	Aug-21	100.0	98.3
	Sep-21	100.0	98.4
	Oct-21	100.0	98.4
	Nov-21	100.0	98.4
	Dec-21	100.0	98.4
	Jan-22	100.0	98.4
	Feb-22	100.0	98.8
Mar-22	100.0	98.8	
ANNUAL TREND	2018/19	100.0	100.0
	2019/20	100.0	100.0
	2020/21	100.0	99.6
	2021/22	100.0	98.8



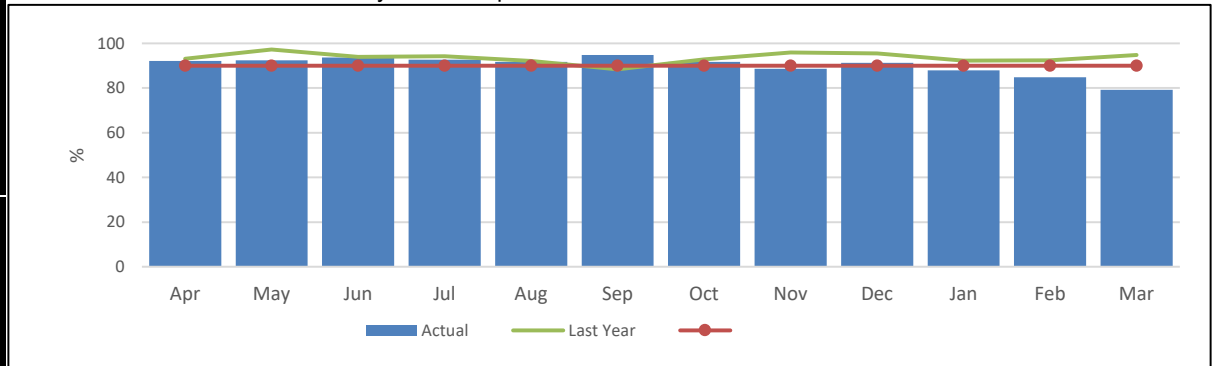
CHILDREN IN CARE - STATUTORY VISITS

DEFINITION Percentage of Children in Care who had all statutory visits completed within required timescales and percentage of Children in Care's statutory visits completed within timescales each month and year to date.

PERFORMANCE ANALYSIS 90.1% of statutory visits for Children in Care (CiC) were completed in timescale in 2021/22. This is a small decrease compared with 2020/21 when there were 93.1% of visits completed in timescale.

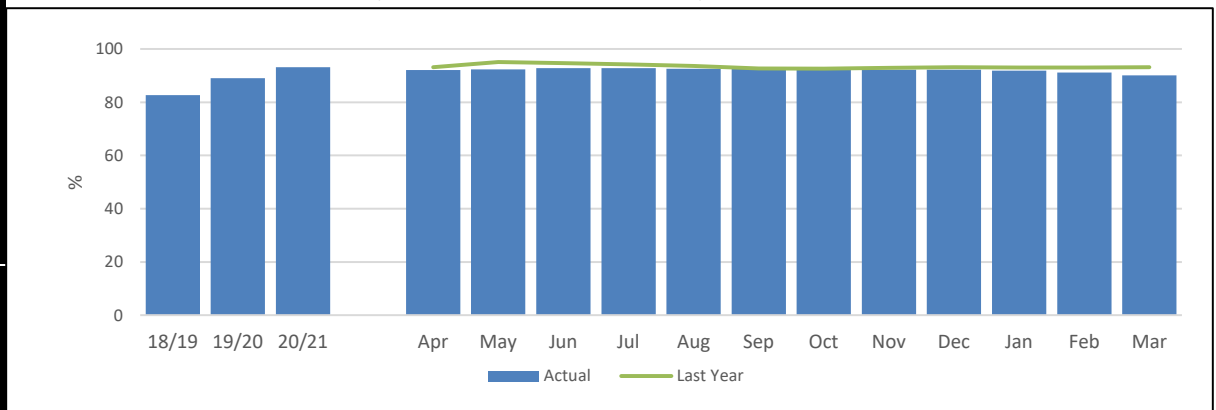
CSC 260a	CSC 260b
% Child in Care statutory visits completed in timescale within the month	% Child in Care statutory visits completed in timescale year to date

CSC 260a: % Child in Care statutory visits completed in timescale within the month



IN MONTH PERFORMANCE	Target	90	90	
	Apr-21		92.1	92.1
	May-21		92.5	92.3
	Jun-21		93.7	92.8
	Jul-21		92.7	92.8
	Aug-21		91.7	92.6
	Sep-21		94.8	92.9
	Oct-21		91.7	92.7
	Nov-21		88.6	92.2
	Dec-21		91.3	92.2
	Jan-22		87.9	91.8
	Feb-22		84.9	91.1
	Mar-22		79.3	90.1

CSC 260b: % Child in Care statutory visits completed in timescale year to date



ANNUAL TREND	2018/19	82.6	82.6
	2019/20	89.0	89.0
	2020/21	93.1	93.1
	2021/22	79.3	90.1

CHILDREN IN CARE - PLACEMENTS

DEFINITION

Of those Children in Care at the point in time (excluding series of short-term placements), the percentage that had 3 or more separate placements in the previous 12 months; who had been in their current placement for 2 or more years. and who were placed more than 20 miles away from their home address.

On the whole stability is associated with better outcomes; placement instability has been highlighted as a key barrier to improving educational outcomes. Proper assessment and an adequate choice of placements to meet the varied needs of different children are essential if appropriate stable placements are to be made. Inappropriate placements often break down and lead to frequent moves. Nevertheless, the circumstances of some individual children will require 3 or more separate placements during a year if they and others are to be kept safe.

PERFORMANCE ANALYSIS

10.6% of Children in Care, as at March 2022, have had 3 or more placements within the previous 12 months. This is in line with our internal target (10.0%), and above the 8.0% as at March 2021.

Currently, 74.0% of our Children in Care aged under 16 (who have been looked after for at least 2.5 years) have been in their current placement continuously for at least 2 years. This percentage is positively higher when compared with March 2021 (72.0%) and our 68% target.

6.6% of our Children in Care have been placed 20 or more miles away from home as at March 2022. This is positively below target of 10% and nearly half that of March 2021 (12.0%). All these placements have been confirmed by team managers to be appropriate for the child enabling them to have the best support either with family links or specialised care.

		CSC 228	CSC 229	CSC 230
		% Children in Care with 3 or more placements moves during last 12 months	% Children in Care who have been in their current placement for 2 or more years	% Children in Care placed 20 miles or more away from home
IN MONTH PERFORMANCE	Target	10%	68%	10%
	Apr-21	8.7	70.9	7.8
	May-21	9.3	73.0	8.0
	Jun-21	9.9	69.1	8.8
	Jul-21	9.6	72.9	9.2
	Aug-21	10.3	73.5	8.9
	Sep-21	9.8	69.8	8.3
	Oct-21	8.9	75.2	7.4
	Nov-21	8.8	72.7	8.0
	Dec-21	10.0	73.5	6.1
	Jan-22	9.0	75.4	6.3
	Feb-22	10.4	76.3	7.0
Mar-22	10.6	74.0	6.6	

		CSC 228	CSC 229	CSC 230
ANNUAL TREND	2018/19	8.0	64.4	11.0
	2019/20	11.0	70.0	11.0
	2020/21	8.0	72.0	12.0
	2021/22	10.6	74.0	6.6

CSC 228: % Children in Care with 3 or more placements moves during last 12 months

CSC 229: % Children in Care who have been in their current placement for 2 or more years

CSC 230: % Children in Care placed 20 miles or more away from home

CHILDREN IN CARE - INITIAL HEALTH ASSESSMENTS

DEFINITION	Percentage of Initial Health Assessments completed within 20 working days of a child coming into our care year to date (data from Health), and percentage of IHA forms returned to Health within 7 working days.
-------------------	--

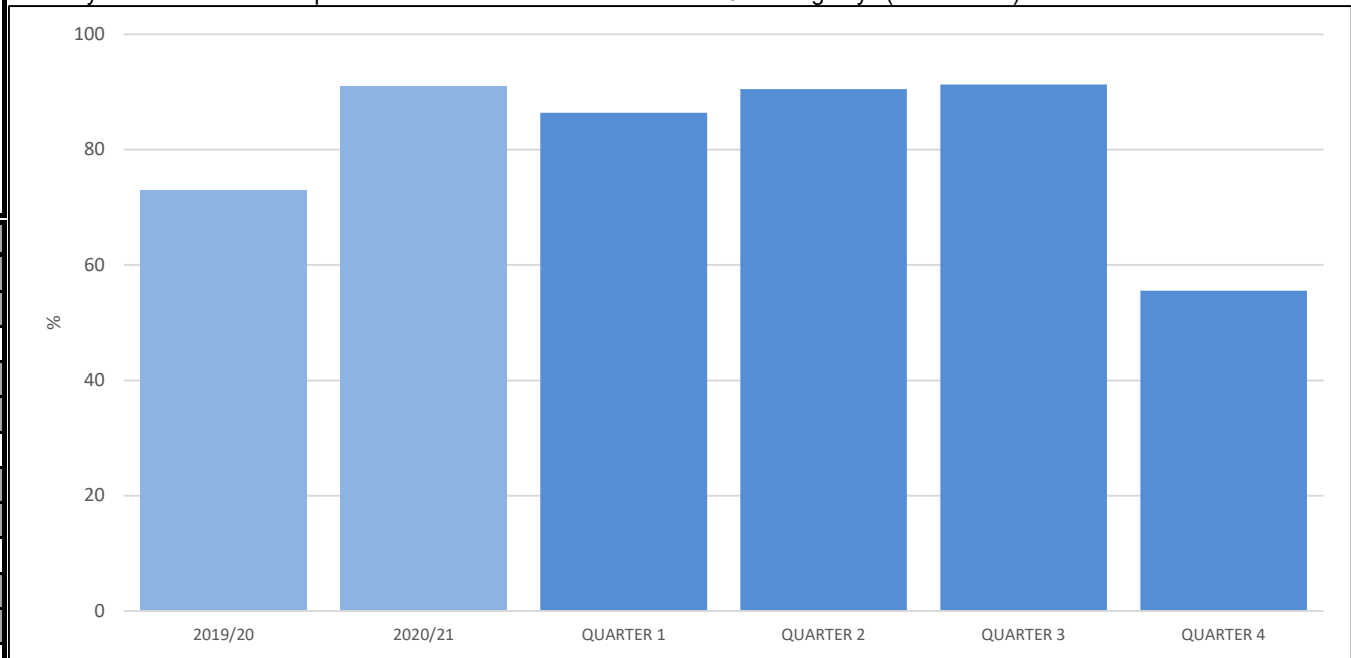
PERFORMANCE ANALYSIS	The CDDFT saw 82.1% of children within 20 days for their health appointment in 2021/22. Of note is that 44.4% of the children, during Q4, were unable to be seen during the 20 day timescale due to availability of the appointments.
-----------------------------	---

IN MONTH PERFORMANCE	Target	95	
	Apr-21		
	May-21		
	Jun-21	86.4	
	Jul-21		
	Aug-21		
	Sep-21	90.5	
	Oct-21		
	Nov-21		
	Dec-21	91.3	
	Jan-22		
	Feb-22		
	Mar-22	55.6	

ANNUAL TREND		
	2018/19	86.2
	2019/20	72.9
	2020/21	90.9
	2021/22	82.1%

% Newly in to care with a completed Initial Health Assessment within 20 working days (from Health)

% Newly in to care with a completed Initial Health Assessment within 20 working days (from Health)

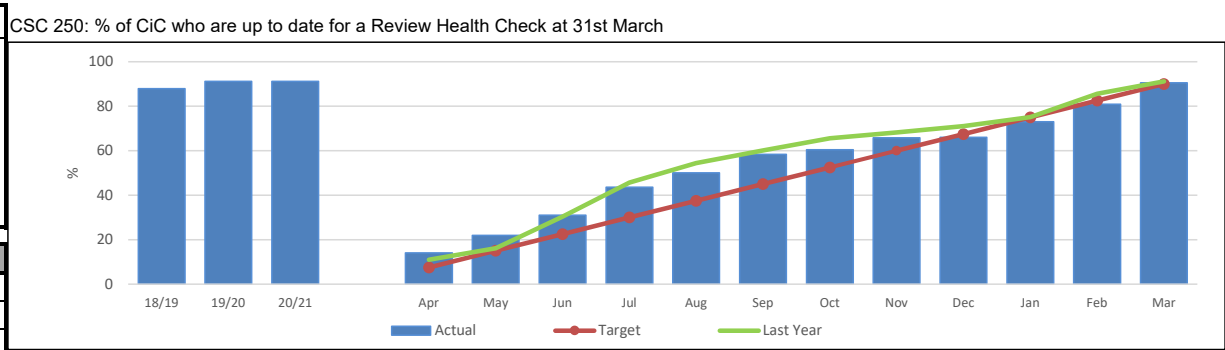


CHILDREN IN CARE - HEALTH ASSESSMENTS

DEFINITION
 Of the Children in Care (CiC) at 31 March who had been in care continuously for at least 12 months, the percentage who have had their Review Health Assessment (RHA) completed and the percentage who have an up to date Health Check.
 Children in Care share many of the same health risks and problems as their peers, but often to a greater degree. These indicators track the participation of our Children in Care's health as a proxy for monitoring the general health and wellbeing of the children, as well as providing a check on the effectiveness of joint working with Health to secure good health outcomes for Children in Care.

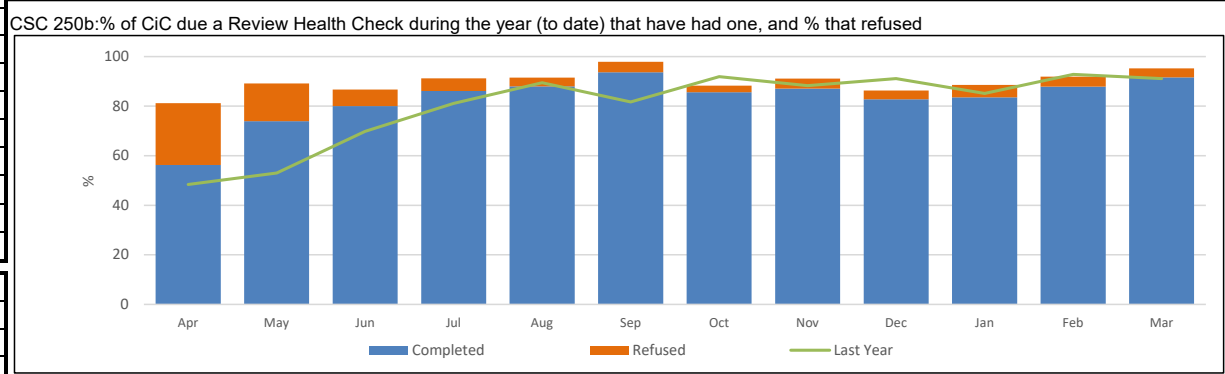
PERFORMANCE ANALYSIS
 90.5% of children and young people due a review health assessment by end 2021/22 have had one completed.
 Of the children and young people who did not have a health review, 3.7% of them are refusing to have one completed at this time. Although they are refusing, they are continually reminded of the benefits of having a check-up and encouraged to take part.

CSC 250		CSC 250b
The % of CiC who have an up to date Health Checks (excludes any who will turn 18 before 31st March)	The % of CiC who were due a Review Health Check (year to date) who refused to engage	The % of Children in Care who were due a Review Health Check year to date and were completed and recorded



IN MONTH PERFORMANCE

	Target	90%		90%
Apr-21	14.1	25.0	56.3	
May-21	22.0	15.2	73.9	
Jun-21	31.0	6.7	80.0	
Jul-21	43.6	5.1	86.1	
Aug-21	50.0	3.6	88.0	
Sep-21	58.4	4.2	93.7	
Oct-21	60.4	2.7	85.6	
Nov-21	65.8	4.0	87.1	
Dec-21	66.0	3.6	82.7	
Jan-22	73.0	5.0	83.6	
Feb-22	80.9	4.0	87.9	
Mar-22	90.5	3.7	91.6	



ANNUAL TREND

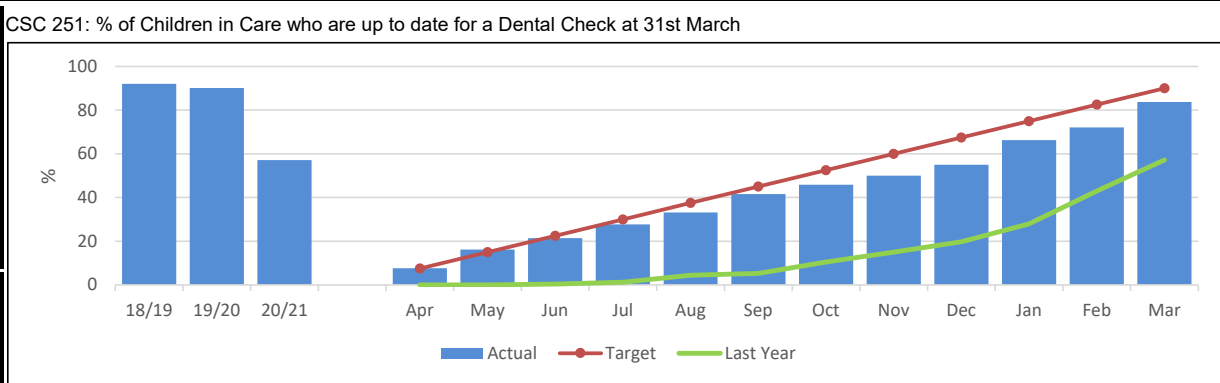
2018/19	87.9		87.9
2019/20	91.2	3.1	93.3
2020/21	91.2	3.7	91.2
2021/22	90.5	3.7	91.6

CHILDREN IN CARE - DENTAL HEALTH ASSESSMENTS

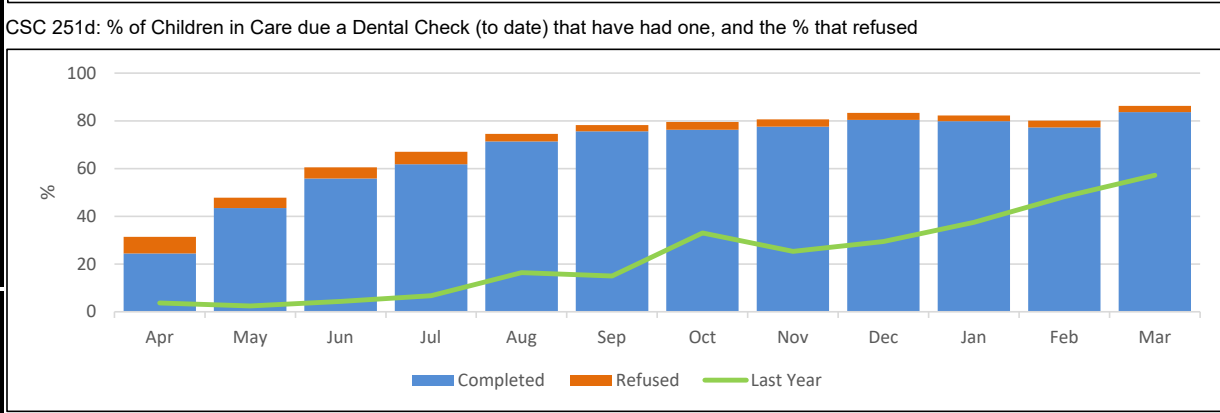
DEFINITION
 Of the Children in Care (CiC) at 31 March who had been in care continuously for at least 12 months, the percentage who had had their teeth checked by a dentist during the previous 12 months, and the percentage who had had an annual health check during the previous 12 months.
 Children in Care share many of the same health risks and problems as their peers, but often to a greater degree. These indicators track the participation of our Children in Care with dental checks as a proxy for monitoring the general health and wellbeing of the children, as well as providing a check on the effectiveness of joint working with Health to secure good health outcomes for Children in Care.

PERFORMANCE ANALYSIS
 83.7% of children and young people due a dental check assessment by end of 2021/22 have had one completed.
 Of the children and young people who did not have a dental check, 2.6% of them are refusing to have one completed at this time. Although they are refusing, they are continually reminded of the benefits of having a check-up and encouraged to take part.

CSC 251	The % of Children in Care who were due a Dental Check (year to date) who refused to engage	CSC 251d
The % of Children in Care with up to date Dental Checks (excludes any who will turn 18 before 31st March)		The % of Children in Care who were due a Dental Check year to date and were up to date by the report date



	Target	90%	90%
	IN MONTH PERFORMANCE		
Apr-21	7.7	7.0	24.4
May-21	16.2	4.3	43.5
Jun-21	21.4	4.7	55.8
Jul-21	27.7	5.2	61.9
Aug-21	33.2	3.1	71.4
Sep-21	41.6	2.6	75.7
Oct-21	45.9	3.3	76.2
Nov-21	50.0	3.1	77.5
Dec-21	55.0	2.9	80.4
Jan-22	66.3	2.4	79.9
Feb-22	72.2	2.8	77.2
Mar-22	83.7	2.6	83.7
ANNUAL TREND			
2018/19	92.1		92.1
2019/20	90.2	3.1	90.2
2020/21	57.2	2.8	57.2
2021/22	83.7	2.6	83.7



CARE LEAVERS

DEFINITION
 The percentage of 'former relevant' care leavers aged 19-21 who were in suitable accommodation at their most recent contact, and the percentage who were not in employment, education or training at their most recent contact. Published data is included for comparison however data submitted to DfE by Local Authorities captures the young person's status around their 19th, 20th, or 21st birthday each year rather than the latest available information. This measures accommodation and employment outcomes for young people formerly in care - a key group at risk of social exclusion. It is intended to increase the proportion of former care leavers who are in suitable accommodation and employment, education or training.

PERFORMANCE ANALYSIS
 100.0% of our care leavers were in suitable accommodation at the end of 2021/22.
 Of the young people (aged 19-21), as of 31st March 2022, were Not in Education, Employment or Training (NEET).
 • 5.8% because of illness or disability
 • 9.6% because of other circumstances
 • 7.7% because of pregnancy or parenting.
 This equates to 23.1% of our care leavers which is positively below the internal target of 30% NEET.
 11.5% of our care leavers were engaging in education (7.7% are in studies beyond A level) and 65.4% young people were in training or employment (26.9% in full time, 38.5% in part time).

	Target	CSC 286	CSC 294
		% Care Leavers in suitable accommodation	% Care Leavers NEET
IN MONTH PERFORMANCE	90%	30%	
	Apr-21	100.0	19.1
	May-21	100.0	25.0
	Jun-21	100.0	21.7
	Jul-21	100.0	20.8
	Aug-21	100.0	23.9
	Sep-21	100.0	21.3
	Oct-21	100.0	20.4
	Nov-21	100.0	20.4
	Dec-21	100.0	17.7
	Jan-22	98.1	20.8
	Feb-22	98.1	24.1
Mar-22	100.0	23.1	
ANNUAL TREND	2018/19	96.0	28.0
	2019/20	95.0	27.0
	2020/21	100.0	21.0
	2021/22	100.0	23.1

